

# SPEC SHEET + MEASUREMENTS

PORT AUTHORITY.

Port Authority® Youth Value Fleece Jacket. Y217

## Product photo



This exceptionally soft, low-pill midweight fleece jacket will keep you warm during everyday excursions and it's offered at an unbeatable price.

- 8.3-ounce, 100% polyester
- Twill-taped neck
- Reverse coil zipper
- Chin guard
- Bungee cord zipper pulls
- Front zippered pockets
- Open cuffs

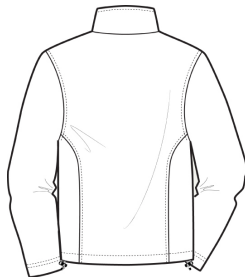
## CARE INSTRUCTIONS

Machine wash cold. Gentle cycle with like colors. Non-chlorine bleach when needed. Tumble dry low. Remove promptly. Do not iron.

## Sketches



front



back

# SPEC SHEET + MEASUREMENTS

PORT AUTHORITY

Port Authority® Youth Value Fleece Jacket. Y217

## PRODUCT MEASUREMENTS

	XS	S	M	L	XL
Size	4	6/8	10/12	14/16	18/20
Chest	15	16	17	19	21
Sleeve Length	23 1/2	26 1/2	29 1/2	32 1/2	35 1/2
Body Length at Back	19 1/2	21 1/2	23 1/2	25 1/2	27 1/2

**Chest:** Measured across the chest one inch below armhole when laid flat.

**Sleeve Length:** Start at center of neck and measure down shoulder, down sleeve to hem.

**Body Length at Back:** Measured from high point shoulder to finished hem at back.

## SIZE CHARTS

	XS	S	M	L	XL
Size	4	6/8	10/12	14/16	18/20
Chest	25-26	26-28	28-30	30-32	32-35

# SPEC SHEET + MEASUREMENTS

PORT AUTHORITY.

Port Authority® Youth Value Fleece Jacket. Y217

## HOW TO MEASURE

---



### CHEST

Measure under the arm and around the fullest part of the chest with arms down, keeping tape horizontal.

## COLORS

---



Black  
PMS BLACK  
C



Forest Green  
PMS 553C



Iron Grey  
PMS 7540C



True Navy  
PMS 5255C



True Red  
PMS 200C



True Royal  
PMS 7687C